



HFY Fan Powered Terminal Unit

DEDICATED OUTDOOR AIR SYSTEM (DOAS)



High Performance
Energy Efficient
Cost Effective
**Exceptional Occupant
Comfort**
Simple Maintenance

HFY Fan Powered Terminal Unit

DEDICATED OUTDOOR AIR SYSTEM (DOAS)



* Shown with optional Arctic White paint

REDUCES FIRST COST of a project by reducing air handler size and required ductwork through more efficient management of partial system loads. Valve packages and controls can be factory-installed to reduce measurable time on the jobsite. The HFY also reduces the number of components required to supply the space with the desired conditions (temperature, humidity and fresh air).

REDUCES OPERATING COST through energy efficient EC Motors and proportional controls that modulate air and water flow in response to delta from set point and by providing feedback on system operation and health via communication with the BMS.

MAXIMIZES OCCUPANT COMFORT by delivering the right amount of dehumidified, preconditioned outdoor air at the lowest sound levels. No more over-ventilation/cooling. This system is optimized to meet ASHRAE standards 90.1 and 62.1 for energy savings and indoor air quality, as well as local codes.

Provides ultimate **FLEXIBILITY**, with **EASE OF SERVICE** and **INSTALLATION**. Available in sizes ranging from 600 to 2000 CFM, the HFY can be customized to specific job requirements including footprint, constant volume or torque operation, and heating needs. Units arrive at the site ready to hang with pre-installed Unistrut channels, and are designed to provide ready access to critical parts for rapid service, cleanability, and maintenance.

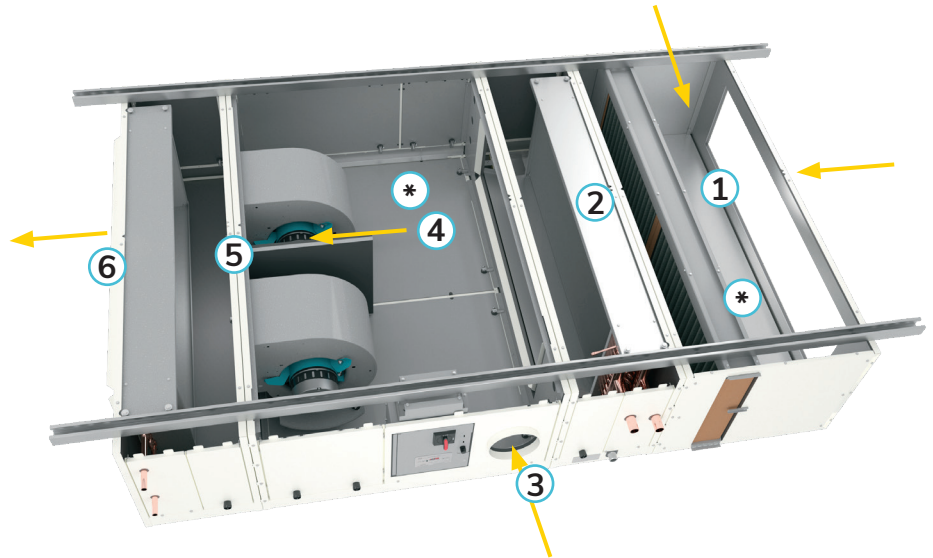
HFY Fan Powered Terminal Unit

DEDICATED OUTDOOR AIR SYSTEM (DOAS)

Product Functionality

1. Top or Rear Return air enters unit.
2. Air is drawn through the MERV filter and cooling coil.
3. Preconditioned outdoor air is introduced to unit when CO₂ levels call for demand.
4. Preconditioned outdoor air mixes with return air.
5. Air passes the EC Motor/ blowers.
6. Air passes through heating coil or Electric Heat module and into the room.

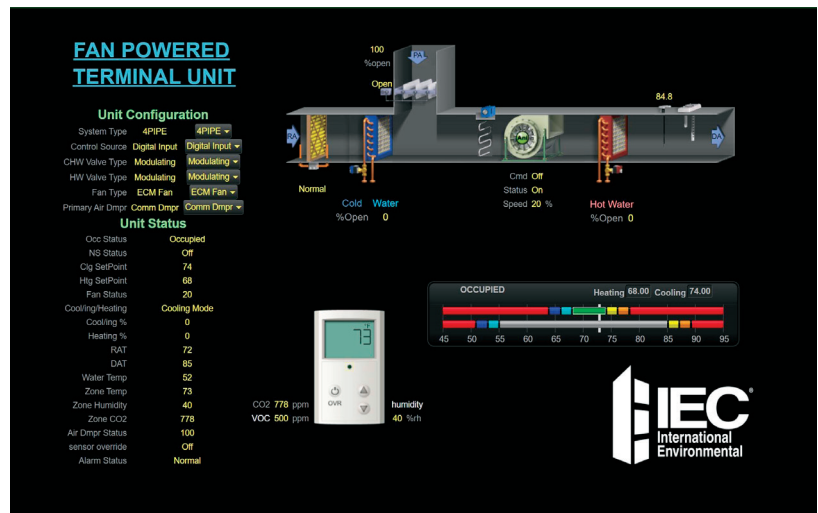
* Extended plenum for sound attenuation



Controls System Offering

IEC's DDC Controls System Offering provides all the necessary control and sensor solutions for the HFY series:

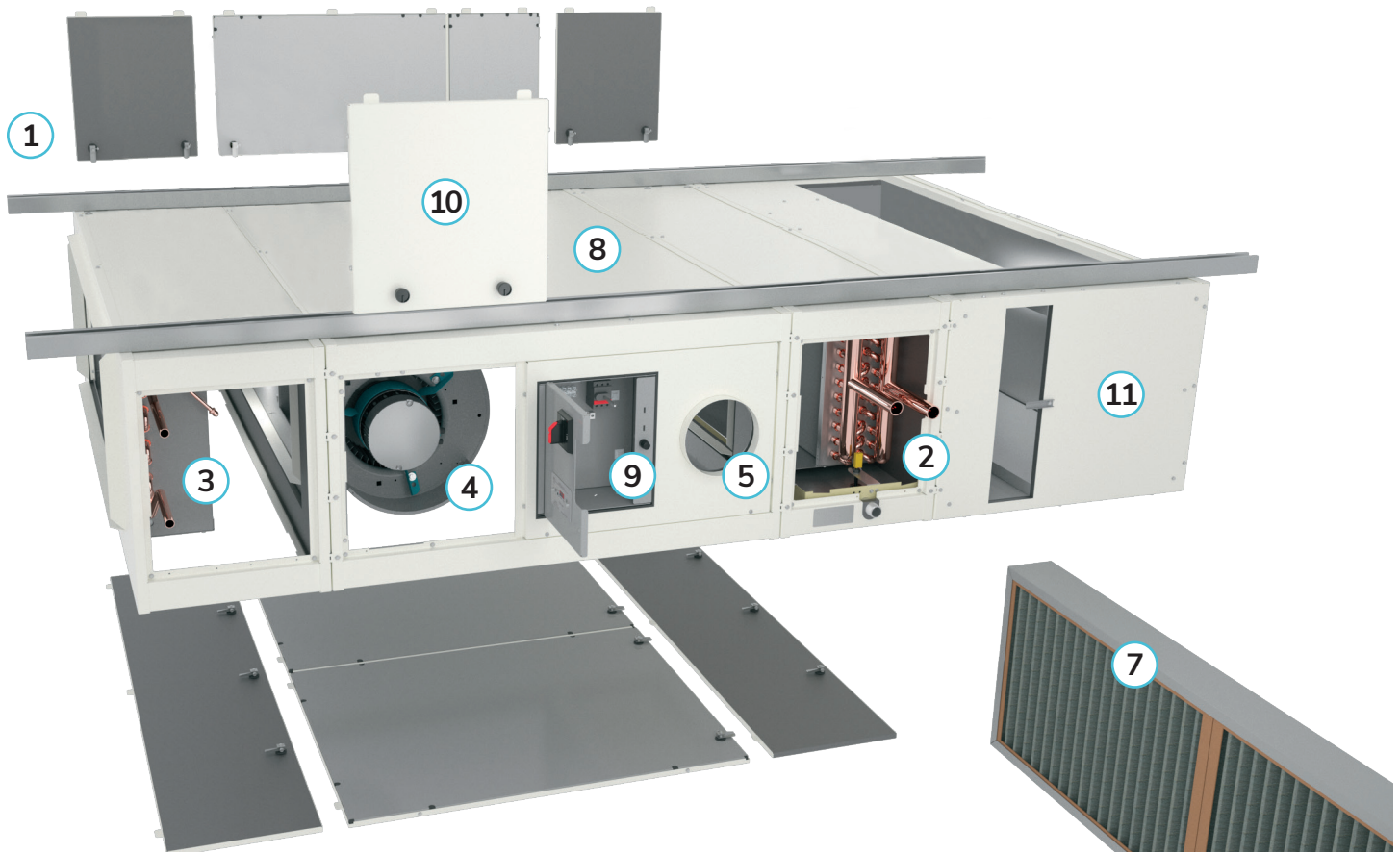
- Airflow, water, electric heat control
- ECM 0-10V control
- Outdoor air flow
- IAQ solutions (ex. Bipolar Ionization)
- VOC/CO₂ sensor
- Condensate overflow indication
- Dirty filter indication
- Supply & return air temperature sensor
- Humidity sensor
- Occupancy sensor
- Fire alarm sensor
- BACnet & modbus communication



Example of Packaged Controls Solution

HFY Fan Powered Terminal Unit

DEDICATED OUTDOOR AIR SYSTEM (DOAS)



Product Features

1. Horizontal sizes 06-20 available
2. 2-pipe 3, 4, 6, 8 row coil options with double sloped drain pan
3. 2-pipe 1, 2, row heating options or Total Electric Heat
4. Standard EC Motor
5. 6"-14" outdoor air damper assemblies
6. 1/2" single or double wall insulation
7. 1", 2", 4" MERV 8, 13 or 14 filter
8. Additional plenum for sound reduction
9. Complete DDC Controls System Solutions
10. Multiple service and access panels
11. Premium sound package



K-12
Education



Multi-family
Residential



Office

Contact your local IEC Sales Representative for further details and pricing applicable to this product. Visit our website (iec-okc.com) to find your local IEC Sales Rep.

IEC Part Number: I100-90034489
FL-100 Revision 1 (07/2021)

©2021 International Environmental Corporation (IEC)



5000 W. I-40 Service Rd.
Oklahoma City, OK 73128
P: 405.605.5000
F: 405.605.5001
www.iec-okc.com